

LEGAL DESCRIPTION: PART OF THE REMAINDER OF LOT C PLAN 33983 SEC. 3, TP. 23 (S OF) ACADEMY WAY

SURVEY MONUMENT			
MONUMENT NUMBER	NORTHINGS	EASTING	ELEVATION
BM	553378.310	327554.439	476.814
IP712	5533783.081	327697.368	507.868
IP717	5533333.097	327703.802	484.046
IP746	5533700.814	327334.898	524.232

**UTILITY INSTALLATION:**  
 LOCATIONS AND OFFSETS OF EXISTING UTILITIES SHOWN ON THESE PLANS ARE BASED ON THE MOST RECENT INFORMATION AVAILABLE BUT ARE NOT GUARANTEED. THE CONTRACTOR SHALL VERIFY THE LOCATION AND DEPTH OF ALL UTILITIES PRIOR TO CONSTRUCTION. PROPOSED LOCATION OF ALL SHALLOW UTILITY APPURTENANCES ARE SCHEMATIC ONLY. DETAILS MUST BE OBTAINED FROM EACH UTILITY COMPANY.

**ELECTRICAL**  
 ALL CONSTRUCTION TO CONFORM TO THE SPECIFICATIONS AND THEIR DRAWINGS. CONTRACTOR IS RESPONSIBLE FOR OBTAINING CURRENT DRAWINGS. TELEPHONE  
 ALL CONSTRUCTION TO CONFORM TO THE SPECIFICATIONS AND THEIR DRAWINGS. CONTRACTOR IS RESPONSIBLE FOR OBTAINING CURRENT DRAWINGS.

**CABLE T.V.**  
 ALL CONSTRUCTION TO CONFORM TO THE SPECIFICATIONS AND THEIR DRAWINGS. CONTRACTOR IS RESPONSIBLE FOR OBTAINING CURRENT DRAWINGS.

**GAS**  
 CARRIER PIPE IS REQUIRED AT ALL ROAD CROSSINGS TO FACILITATE GAS MAIN INSTALLATION. SEE GAS DESIGN DRAWINGS FOR INSTALLATION INSTRUCTIONS.

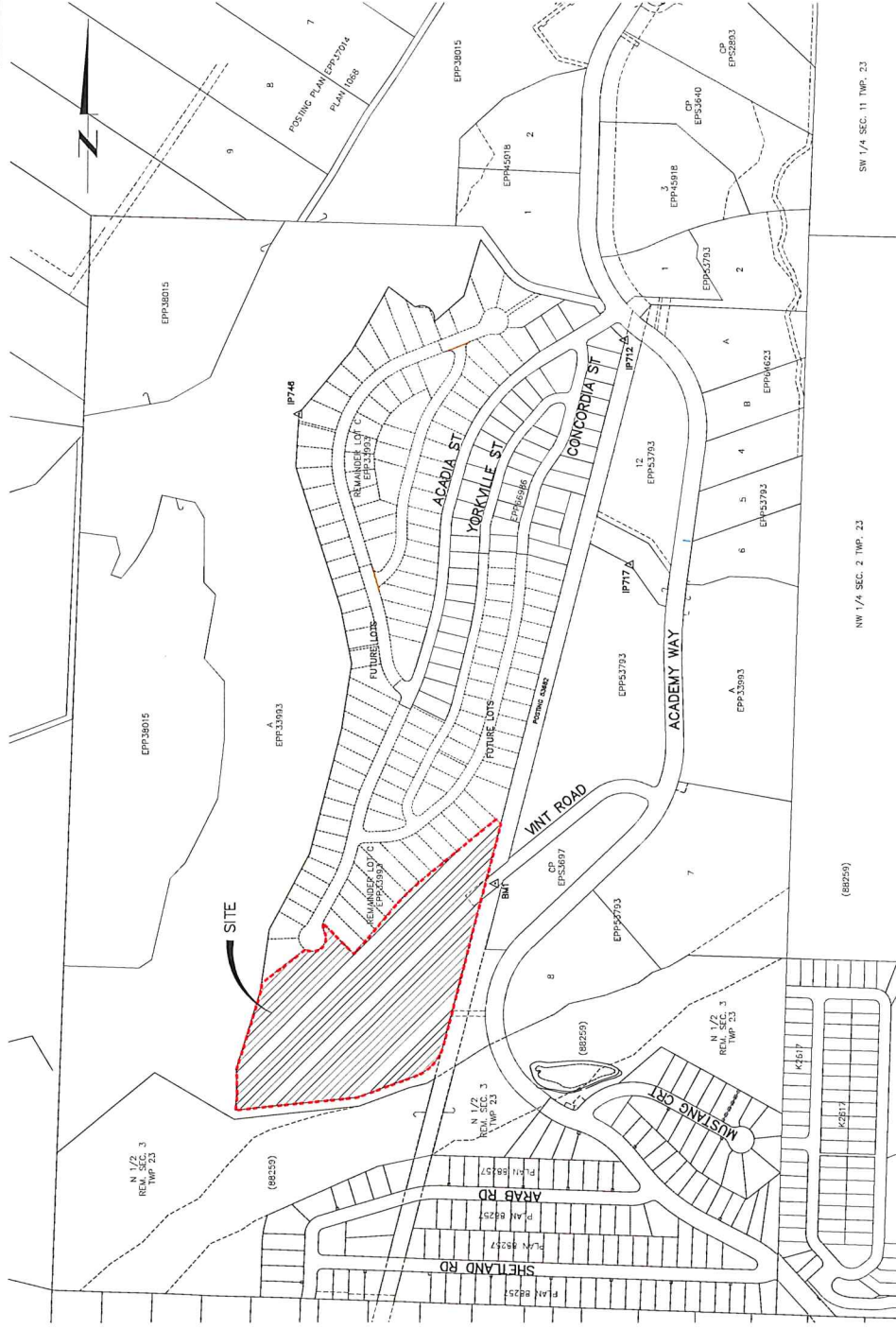
**ON-SITE SERVICING COORDINATION:**  
 CIVIL CONTRACTOR TO INSTALL SERVICE CONNECTION TO THE BUILDING. ALL MECHANICAL INFORMATION PROVIDED BY MECHANICAL ENGINEER. REFER TO MECHANICAL DRAWINGS FOR COMPLETE DETAILS. FOR SERVICES THE IN, SEE MECHANICAL DRAWINGS FOR CONTINUATION.

ALL ELECTRICAL INFORMATION PROVIDED BY ELECTRICAL ENGINEER. REFER TO ELECTRICAL DRAWINGS FOR COMPLETE DETAILS. FOR SERVICES THE IN, SEE ELECTRICAL DRAWINGS FOR CONTINUATION.

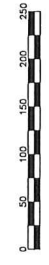
ALL LANDSCAPE INFORMATION, INCLUDING PROPOSED BUSHING, PROVIDED BY LANDSCAPE ARCHITECT. REFER TO LANDSCAPE DRAWINGS FOR COMPLETE DETAILS.

**GED WATERMAIN NOTES:**  
 a. ALL JOINTS AND FITTINGS TO BE PROTECTED BY DENSO PASTE AND TAPE AND BE PROTECTED BY SACRIFICIAL ANODES.  
 b. INSTALL #10 TO #12 GAUGE SINGLE FIRE UF INSULATION TRACER WIRE ALONG ALL NEW WATERMAIN.  
 c. CONNECTION TO THE EXISTING WATERMAIN TO BE COMPLETED BY CONTRACTOR UNDER SUPERVISION OF GED AT DEVELOPER'S EXISTING CUSTOMERS OF THE DISPOSITION, AND A WORK PLAN/SCHEDULE SHALL BE PROVIDED BY CONTRACTOR AND APPROVED BY GED PRIOR TO THE TIE-IN PROCEEDING.

**NOTES:**  
 1. ALL WORK TO BE CONSTRUCTED IN ACCORDANCE WITH MDCD PLATINUM SERVICE STANDARDS AND SPECIFICATIONS FOR GED WATERMAIN AND SERVICES BY-LAW NO. 7900 AND AMENDMENTS, AND BC BUILDING CODE 2018.  
 2. VERIFY LOCATION AND GRADE OF EXISTING UTILITIES PRIOR TO CONSTRUCTION OF PROPOSED STORM, SANITARY AND WATER MAINS.  
 3. MEASURE INFORMATION (LOCATION, DEPTH) ANY AND ALL UTILITIES ENCOUNTERED DURING CONSTRUCTION AND FORWARD THIS INFORMATION TO GED CONSULTANTS LTD.  
 4. ENSURE MINIMUM COVER OVER WATERMAIN IS 1.5m.  
 5. ENSURE WATERMANS HAVE MINIMUM SEPARATION FROM PIPE EDGE TO PIPE EDGE OF 1.0m FROM STORM AND SANITARY MAINS AND A VERTICAL DIFFERENCE, PIPE EDGE TO PIPE EDGE, OF 0.45m AT CROSSINGS.  
 6. HORIZONTAL SEPARATION FROM SANITARY OR STORM MAINS (USE U.H.A. APPROVED WRAP).  
 7. MARK ALL SERVICE STUB LOCATIONS WITH 2x4 POST PAINTED AS PER MDCD: WATER-BLUE, SANITARY-RED, STORM-GREEN. MARK POSTS WITH SERVICE DEPTH.



C-01  
 1:1  
 SCALE 1:1500  
 MARCH 1, 2019



UNIVERSITY-HEIGHTS  
 VINT ROAD MULTI-FAMILY  
 SITE LOCATION PLAN